

# ELITE SERIES™

# 3850

DC Motor Belt Drive  
Garage Door Opener with



## WITH EVERCHARGE® STANDBY POWER SYSTEM BUILT IN.

For a higher level of security and uninterrupted convenience, we offer a 3/4 HPS\* DC motor belt drive garage door opener that continues working, even when the power goes out.

The patented EverCharge® Standby Power System will operate the garage door opener for 40 cycles within a 24-hour period and power vital safety functions, such as The Protector System® safety reversing system, in the event of an electrical outage. Plus, when the power comes back on the system recharges automatically.



12V DC battery fits neatly inside the opener

Ultra-quiet DC belt drive system. Variable speed soft start/soft stop. Audible signal tells you the power is out and EverCharge® Standby Power System battery is in use.

- 200-watt lighting
- Meets all UL325 requirements
- Lifetime motor and belt warranty

**LiftMaster® 3850, the ultimate in performance, technology and functionality.**

\* 3/4 HPS is defined as horsepower strength. 3/4 HPS has the same lifting force specifications as 3/4 HP LiftMaster garage door openers.

**At Chamberlain, safety is a major part of our mission.**

*It's our commitment to you and, quite simply, the way we produce products every day. Our LiftMaster® products are designed to move the largest door in your home, safely, securely and by always putting safety first.*

## ACCESSORIES INCLUDED



### Premium Remote

Innovative design automatically streams brilliant blue lights from the push-button windows when you pass your hand over the remote.



### Smart Control Panel™

Displays time, temperature and diagnostic messages in 3 languages. A motion sensor turns opener lights on "hands-free" and a convenient "learn" button easily programs remotes.

CHAMBERLAIN®

# LiftMaster®

ELITE SERIES

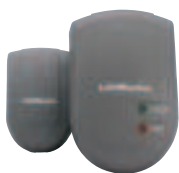
# 3850

## UNSURPASSED SAFETY AND SECURITY

All LiftMaster® garage door openers are manufactured with the highest level of safety and monitoring systems to ensure safe operation.

- The Protector System® safety sensors reverse the door automatically if the infrared beam is broken, before contact is made.
- Sensing technology will stop the door from closing if contact is made with a person or object.
- Security+® Rolling Code Technology assures a new code is sent every time the remote is used.
- Patented PosiLock® system ensures the door remains securely locked when it is closed.
- Opener light turns on automatically when The Protector System® safety infrared beam is broken.

## ENHANCE YOUR LIFESTYLE WITH OPTIONAL ACCESSORIES



### know for sure the door is closed

Lets you know whether the garage door is open or closed from any room in the house. A flashing red light shows the door is open; a glowing green light indicates the door is closed.

### GARAGE DOOR MONITOR (915LM)

### enter without a key

Open your garage door without using a remote control and close with just the push of a button. Also can be programmed with a temporary entry code for friends and service people.



### WIRELESS KEYLESS ENTRY with SECURITY+® (377LM)



### access on the go

Operates up to 3 garage doors. Turns garage door opener lights on and off. Fits on keychain or in a pocket or purse.

### MINI 3-BUTTON REMOTE CONTROL with SECURITY+® (370LM)

### put control where you want it

For people who want a second control in their garages. A light control button turns garage door opener lights on and off. Auxiliary button can be programmed to open and close a second garage door.



### WIRELESS CONTROL PANEL (378LM)



### park perfectly every time

The high-tech solution that helps you park perfectly in your garage! As you pull into your garage the laser is activated and projected onto the dashboard, making it easy to park in the same spot every time.

### LASER GARAGE PARKING ASSIST (975LM)

## SPECIFICATIONS

### STANDARD SPECIFICATIONS

#### DIMENSIONS

Installed Length: 125"  
Maximum Door Opening: 7' 6"  
Headroom Clearance Required: 2"  
\*Up to 10' with optional 8' or 10' rails

#### CARTONS

Number of Cartons: 3  
Carton 1 Dimensions and Contents:  
20" x 11.88" x 9.69"  
Smart Control Panel™  
373P Premium 3-Button Remote Control  
Garage Door Opener Head  
The Protector System®  
Carton 2 Dimensions and Contents:  
10' 4" x 5" x 5"  
Assembled Solid-Steel T-Rail  
Carton 3 Dimensions and Contents:  
5.31" x 4.63" x 5.13"  
485LM EverCharge™ Battery

#### SECURITY+® RADIO CONTROLS

Coding System: Smart Receiver  
Code Button and Indicator Light  
373P Premium 3-Button Remote Control  
Operating Range: 150' (approximately)  
Operating Temperature: -40°F to 150°F  
Frequency: 315MHz  
Security+® Anti-Burglary Coding

#### CONVENIENCE/SAFETY

The Protector System®  
Emergency/Quick Release  
Automatic Trolley Reconnect  
Ventilation/Pet Opening  
Down Safety Reverse  
Up Safety Stop  
Door Open/Beam Obstructed/Lights On  
Program Remote Controls from Smart Control Panel™  
EverCharge® Standby Power System  
PosiLock®

### ELECTRICAL SPECIFICATIONS

#### POWER

Voltage: 120V AC, 60Hz; Wattage: 524 Total System (including lights); Current Rating: 2.7A; UL Listings: Yes; Length of Line Cord: 6' (3-prong)

#### LOGIC TYPE

Solid-State Microcontroller with Built-in Surge Suppressor

#### LIGHTING

Number of Bulbs: 2  
Maximum Wattage: 100 x 2  
Adjustable Time, Solid-State Delay

### MECHANICAL SPECIFICATIONS

#### MOTOR

800 Newtons; 12V DC Motor; RPM: 53  
Thermal Protection: Automatic  
Lubrication: Permanent

#### DRIVE MECHANISM

Drive Means: Full Reinforced Drive Belt  
Reduction Means: Gear 63:1  
Door Linkage: Adjustable Door Arm

#### ADJUSTMENTS

Force: Electronic/Internal Auto Force  
Limit: Internal/Electronic

#### TRAVEL RATE

Approximately 11" per Second (Up Direction)  
Approximately 7.5" per Second (Down Direction)

#### SHIPPING WEIGHTS

Head: 17.85 Lbs.  
Rail: 17 Lbs.  
Battery Backup: 3.9 Lbs.

#### MATERIALS

Chassis: Steel  
Rail: Solid-Steel T  
Trolley: Steel

### LIFETIME MOTOR & BELT WARRANTY

5 years on all other parts. For more information, refer to owner's manual. LiftMaster® garage door openers meet all current state and federal regulations and UL safety regulations as of date of manufacture. 1-Year Warranty on 485LM Battery.



The in-vehicle universal remote control. See your automobile dealer for availability.

CHAMBERLAIN®  
**LiftMaster®**  
ELITE SERIES

World's #1 Installed Garage Door Opener

THE CHAMBERLAIN GROUP, INC.  
845 Larch Avenue • Elmhurst, IL 60126  
www.liftmaster.com



**WARNING:** Garage doors and openers can be dangerous if not properly installed, tested and operated. Children should be supervised by an adult whenever in or around the garage area.

©2010 LM 3850 06/10

The Chamberlain Group, Inc.  
Printed in U.S.A.

LMCA0850